

## 250S

ล๊อคประตูแม่เหล็กไฟฟ้า 200 ปอนด์ With L Brwacket

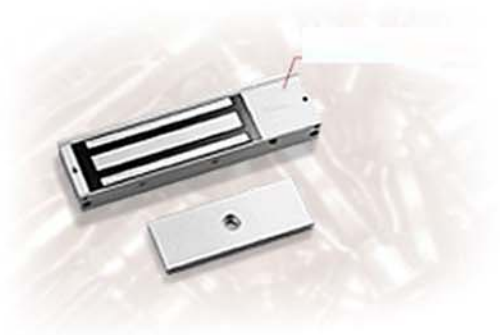
- FACE MOUNTED & SIDE MOUNTED
- STAINLESS STEEL HOUSING
- CURRENT DRAW : 500mA/12V, 250mA/24V
- DUAL VOLTAGE : 12V/24VDC



## 350

ล๊อคประตูแม่เหล็กไฟฟ้า 300 ปอนด์

- MAGNET : 286L x 73H x 40d
- ARMATURE PLATE : 185L x 61W x 16T
- SURFACE MOUNT
- CURRENT DRAW : 600mA/12V,300mA/24V
- DUAL VOLTAGE : 12V



## 6S

ล๊อคประตูแม่เหล็กไฟฟ้า 600 ปอนด์

- MAGNET : 286L x 73H x 40d
- ARMATURE PLATE : 185L x 61W x 16T
- SURFACE MOUNT
- CURRENT DRAW : 600mA/12V,300mA/24V
- DUAL VOLTAGE : 12V



## 600R

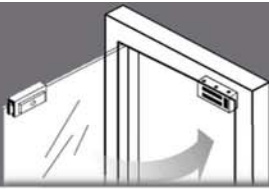
ล๊อคประตูแม่เหล็กไฟฟ้า 600 ปอนด์ แบบมีปีก 2 ข้าง  
สำหรับกรอบประตูอลูมิเนียมแบบเลื่อน (MORTISE)

- MAGNET : 228mmL x 38mmH x 27mmD
- ARMATURE PLATE : 185mmL x 38mmW x 12.5mmT
- MORTISE MOUNTED
- CURRENT DRAW : 500mA/12VDC, 250mA/24VDC
- DUAL VOLTAGE : 12V / 24V



The manufacturer reserves the right to change the specification and technical data of device.  
The picture may vary from the real product.





## 602L

ดัดเบิ้ลล็อกประตูแม่เหล็กไฟฟ้า 600ปอนด์ X2 มี LED

- MAGNET : 532L x 73H x 40D
- ARMATURE PLATE : 185L x 61W x 16T
- SURFACE MOUNTED
- CURRENT DRAW :
- 500mA/12V, 250mA/24V
- DUAL VOLTAGE : 12V OR 24V



## 6L

ล็อกประตูแม่เหล็กไฟฟ้า 600 ปอนด์ มี LED

- MAGNET : 286L x 73H x 40d
- ARMATURE PLATE : 185L x 61W x 16T
- SURFACE MOUNT
- CURRENT DRAW : 600mA/12V,300mA/24V
- DUAL VOLTAGE : 12V / 24V



## 12L

ล็อกประตูแม่เหล็กไฟฟ้า 1,200 ปอนด์ มี LED

- MAGNET : 286L x 73H x 40d
- ARMATURE PLATE : 185L x 61W x 16T
- SURFACE MOUNT
- CURRENT DRAW : 600mA/12V,300mA/24V
- DUAL VOLTAGE : 12V / 24V



## MLM01

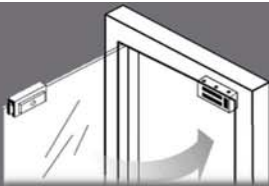
Shear lock 600 lbs. Signal , Timer (ติดพื้นดิน)

- MAGNET : 270mmL x 35mmH x 30mmD
- ARMATURE : 245mmL x 35mmW x 30mmD
- SIGNAL :
- LOCK STATUS SENSOR ( HALL ), TIMER
- CURRENT DRAW : 1.6A/12VDC, 900mA/24VDC
- HOLDING CURRENT : 0.4A/12VDC, 0.3A/24VDC
- DUAL VOLTAGE : 12V / 24V
- BUILT-IN VOLTAGE SPIKE SUPPRESSOR
- CE APPROVED



The manufacturer reserves the right to change the specification and technical data of device.  
The picture may vary from the real product.





### ZL350

L/Z Bracket for 350



### ZL600

L/Z Bracket for 600



### ZL602

L/Z Bracket for 602



### ZL1200

L/Z Bracket for 1200



### U350

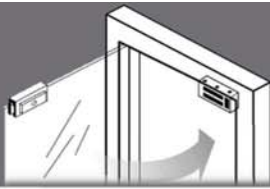
U Bracket for 602



### U600

U Bracket for 600





## ML-200SLD

### ELECTRIC BOLT (สำหรับประตูกระจกบานเลื่อน)

- BODY : 200mmL x 34mmW x 42mmD
- COVER PLATE : 210mmL x 42mmW x 0.8mmD
- FACE PLATE : 200mmL x 34mmW x 3mmD
- STRIKE PLATE : 90mmL x 24mmW x 27mmD
- BOLT : S/S 15.5DIA. WITH 16MM THROW
- CURRENT DRAW : 0.9A/12VDC ( PULL-IN CURRENT )
- HOLDING CURRENT : 0.3A/12VDC
- VOLTAGE : 12VDC OR 24VDC
- ML200SLD: WITH LOCK AND DOOR STATUS SENSOR.
- OPTIONS :
- SL: LOCK STATUS SENSOR
- SD: DOOR STATUS SENSOR
- FAIL-SAFE : LOCKED WHEN ENERGIZED
- AUTO-RELOCK JUMPER



## 10A

### BOX FOR ELECTRIC BOLT OR "U" BRACKET FOR BOLT BOX



## 10B

### "U" BRACKET FOR GLASS DOOR



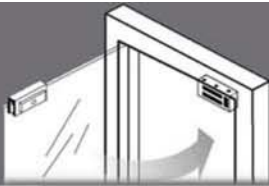
## 10A/B

### ELECTRIC BOLT BOX AND "U" BRACKET (SET)



The manufacturer reserves the right to change the specification and technical data of device.  
The picture may vary from the real product.





## Aluminum Clip

ELECTRIC BOLT (สำหรับขอบกระดานเปลือย)

- BODY : 45mm (L) x 90mm (W) x 25mm (H)
- TYPE : Aluminum



## Stainless Clip

ELECTRIC BOLT (สำหรับขอบกระดานเปลือย)

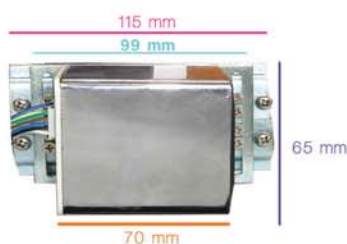
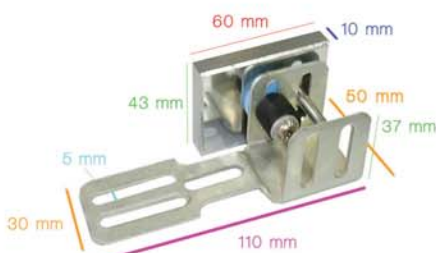
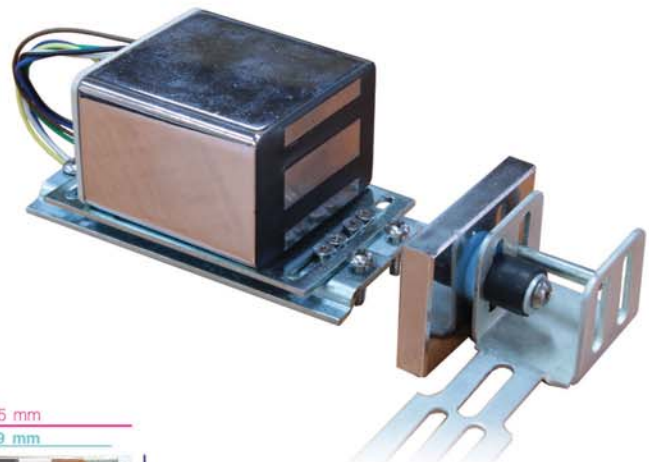
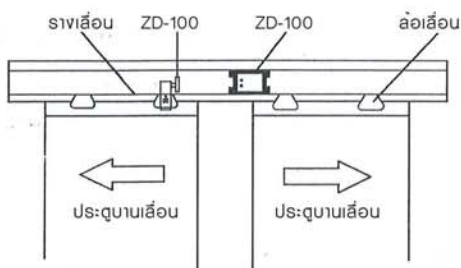
- BODY : 48mm (L) x 93mm (W) x 37mm (H)
- TYPE : Stainless



## ZD-100

ล็อคสำหรับประตูอัตโนมัติ (Auto Door) 220 โปนต

- VOLTAGE : 220 Vac
- CURRENT : 150 mA



The manufacturer reserves the right to change the specification and technical data of device.  
The picture may vary from the real product.

